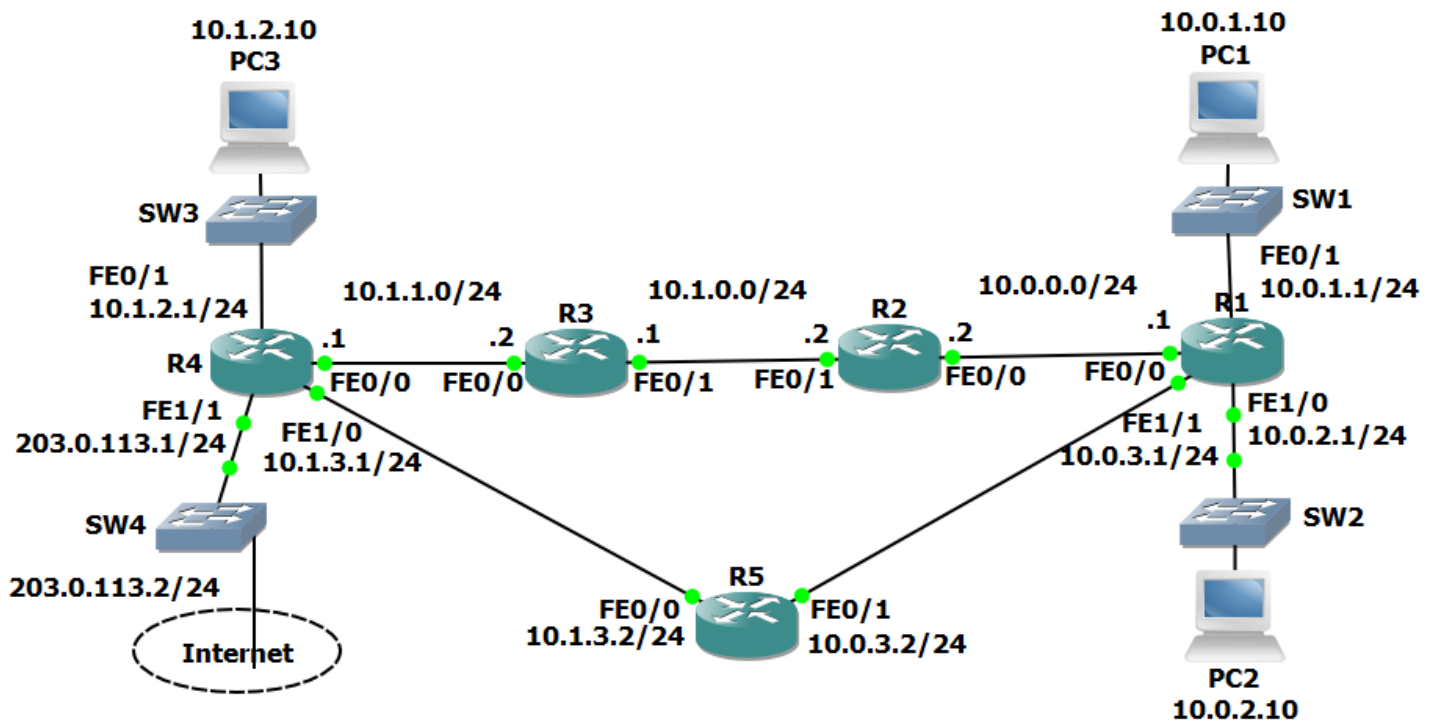


18 Connectivity Troubleshooting

– Lab Exercise

In this lab you will troubleshoot a connectivity issue.

Lab Topology



Load the Startup Configurations

Open the '18 Connectivity Troubleshooting.pkt' file in Packet Tracer to load the lab.

Troubleshoot Connectivity

- 1) Use ping to test connectivity from PC1 to PC3.
- 2) Use traceroute to determine where the problem is likely to be.
- 3) Determine the issue and fix it to restore connectivity between PC1 and PC3.